

The Longhorn Cattle Society Newsletter

March 2020

Issue 106





**BLACKBROOK
LONGHORNS**

SPECIALISTS IN LONGHORN CATTLE BREEDING

FOR SALE

BLACKBROOK BAROQUE

D.O.B 18/03/17 | S. Blackbrook X-Chequer | D. Blackbrook X-Clusive



Request More Information

Tel. +44 (0)1509 503276 | Email. info@blackbrooklonghorns.co.uk | Web. blackbrooklonghorns.co.uk
Blackbrook Longhorns. Coalville, Leicestershire



Follow us on Twitter @BlackbrookLong1



Longhorn News

March 2020

Inside this issue

- 2 From the Chair
- 3 Council Corner
- 4 Ambassadors Award
- 5 Society Sales
- 6 Photo Competition
- 7 Website & Newsletter Ads
- 7 New Members
- 8 Shows News
- 9 Longhorn Judges Panel
- 10 Social Media Policy,
- 10 Health Schemes
- 11 Society News
- 12 Buitelaar Launch Beef Scheme
- 13 Great Berwick & Pipers Crisps
- 14 AGM 2020
- 15 Registration Fees
- 16 Bull Registration Fees
- 17 Bull Minimum Weights
- 18 Society News
- 19 Social Media Publicity
- 20/21 Type Classification
- 22 TB Compensation
- 23 Regional Groups, Merchandise
- 24 Grant Funding
- 25 Bulls For Sale
- 26 Females & Stores For Sale
- 27 Semen For Sale
- 28 Cattle Wanted
- 26 Showing Equipment Offered

Dear Members

Welcome to the March newsletter.

As Tom has mentioned in his note from the Chair, we are in an unprecedented situation with COVID-19 and the advice from Government is being updated on an almost hourly basis. A number of show societies and event organisers have had to make the difficult but probably inevitable decision to cancel their events and there is no indication of how long the pandemic will last.

I was just about to send this newsletter for printing when I was made aware that Suffolk Show had cancelled, so the Society's National Show will obviously not take place there, but the Trustees will investigate other potential venues when the ongoing situation becomes a little clearer.

At present no-one has all the answers and we will do our utmost to keep members informed with regard to other Society events that are detailed in this newsletter, but do bear with us.

Our most effective method of communication is via email, so if the Society does not have an email address for you, please consider letting us have it so we can keep you informed.

Debbie

Thank you to our advertisers:
Blackbrook Longhorns
Fishwick Longhorns
Southfield Longhorns

The Longhorn Cattle Society c10

Debbie Dann, East Lodge, Stoneleigh Park, Stoneleigh, Warwickshire, CV8 2LH

Tel: 0345 017 1027

Email: secretary@longhorncattlesociety.com

Website: www.longhorncattlesociety.com

Twitter @longhornoffice

Facebook @longhorncattlesociety

Instagram @longhorncattlesociety

FROM THE CHAIR

At the time of writing this we appear to be heading into what can only be described as a national crisis caused by the Coronavirus Pandemic. At times like this it makes us focus on what is important in our lives, looking after our friends and loved ones and supporting those most vulnerable. Whilst many industries will be significantly scaling back production and many workers asked to work from home, the agricultural industry, our nation's farmers and our members will be working tirelessly as ever to continue to supply the nation with the food it so critically relies upon.

The farming community has always been one which supports each other in times of need and I'm sure this current challenge will be met with the same response.

The Trustees of the Society are monitoring the situation very closely and will follow Government guidance when considering any changes which undoubtedly will need to be made to our planned events over the coming months. Further details will be provided to members as the situation becomes clearer, particularly with regards to any potential impact on the Worcester Spring Show & Sale and the National Show which would have been at Suffolk in May. I'm sure that a number of other shows will be affected so please keep an eye out on the website as Debbie will be keeping this information as up-to-date as possible.

Thank you to all the members who have contributed to the latest Journal with articles, write-ups and adverts, it is a significant task to put the Journal together and I hope you all enjoy reading it when issued in April.

Tom Mills - Chairman

COUNCIL CORNER

At the latest Council meeting the following matters were raised:

- ◆ The methods of how judges are selected onto the judges' panel was discussed.
- ◆ A draft update of the breed standard was discussed
- ◆ The strategic review final scoping was discussed
- ◆ The final details of the Ambassador's Award were agreed
- ◆ Final details of the AGM weekend were discussed.

COUNCIL MEMBERS

The following Council members represent you in 2020

David Blockley, david@davidblockley.co.uk, 07831 247405

Peter Close, peterclose@hotmail.com, 07779 937217

Bertie Facon, bertrand.facon@gmail.com, 07785 221961

Sophie Gurton, tandsfarms@aol.co.uk, 07772 388908

Tom Mills, millso25@hotmail.com 07968 819134 - Chairman

Pat Stanley, info@blackbrook-longhorns.com, 07860 515893

Graham Walker, walkergraham93@gmail.com, 07957 208021

Mark Wheeler, woodsidewheeler@gmail.com, 07831 151822

Sabine Zentis, cvlonghorns@aol.com, 0049 172 3985221

Please contact any one of them if you have any queries regarding Society or Council matters

COUNCIL MEETINGS

The date of the next Council meeting is 21 April 2020. If you have an issue or idea you wish to raise with Council, please email it to the office by 7 April please.

LONGHORN AMBASSADOR'S AWARD

An exciting new award is being launched for 2020 to recognise and reward a member promoting the Longhorn breed whether it be in classes not confined to Longhorn cattle, or by supplying cattle to exhibitions or events which advertise the breed, or those working hard in the promotion of Longhorn beef - ambassadors of the breed whose story may not be being heard when so much publicity is concentrated around Longhorn-specific showing results.

This award isn't for the member who has won every trophy going in the show ring; it's for the member who has promoted the breed in their own way – an unsung hero if you will. The Council is open to all suggestions so anything goes!

Members should contact the Secretary to nominate a member, or the member can nominate themselves. A few words and photos and hopefully website and social media links describing what this member has done recently to deserve being called a Longhorn Ambassador should be sent in to the office by 31 August 2020.

All the nominations will then go to the Council meeting in September 2020 and a shortlist of three will be selected. The three finalists and then the overall winner will be announced at the AGM in October.

The Society would like to thank Bernard Llewellyn of the Carreg herd for providing a trophy for this new award and Council are looking forward to seeing all the nominations that come in.

The nomination form is available on the website (go into Join Us, then Forms) or contact the office for a posted copy.

SOCIETY SALES

SOCIETY SALES 2020

Sale dates are subject to change, DEFRA animal gathering regulations and Government advice regarding COVID-19
Further details and entry forms available on the Society website.

Saturday 11 April 2020

Society Spring Store Sale

The Livestock Market, Worcester WR4 0SQ
Auctioneers: McCartneys. Tel: 01905 769770

Closing date for entries - 1 April

Saturday 2 May 2020

Spring collective sale

Leek Auctions, Leek Smithfield, Barnfields, Leek, Staffordshire, ST13 5PY
Auctioneers: Leek Auctions. Tel 01538 372749

Longhorn entries invited

Closing date for entries - 24 April

Saturday 16 May 2020

Society Spring Show & Sale

The Livestock Market, Worcester WR4 0SQ
Auctioneers: McCartneys. Tel: 01905 769770

Closing date for entries - 10 April 2020

Friday 11 & Saturday 12 September 2020

Traditional Native Breeds Show & Sale,

Melton Mowbray Market, LE13 1JY

Auctioneers: Melton Mowbray Market Auctioneers, Tel: 01664 562971

Saturday 19 September 2020

Show and Sale of Rare, Traditional and Minority Cattle

Borderway Mart, Carlisle, CA1 2RS

Auctioneers: Harrison & Hetherington

Saturday 10 October 2020

Native Multibreed Sale

Welshpool Market, Buttington Cross, Welshpool, SY21 8SR
Auctioneers: Welshpool Livestock Sales, Tel: 01938 553438

Longhorn entries invited

Closing date for entries - Friday 28 August

Society Autumn Show & Sale

Details to be confirmed

PHOTO COMPETITION

The Society will be holding the photo competition again this year, to be judged at the 2020 AGM. The entries in each class will be displayed at the AGM and the winners decided by the members' votes at the AGM. The categories will be:

1. Posed animal (cow & calf count as one unit) - haltered or free
2. Small herd (ten animals or under) in a landscape
3. Large herd (over ten animals) in a landscape
4. Longhorns at shows
5. Humorous: members and/or cattle
6. Longhorns in commercial setting e.g. pedigree bull with commercial cows, suckler cows, stores/prime stock

Rules

1. **Closing date for entries is Friday 25 September 2020**
2. No entry fee
3. All photographs must be taken by members of the Longhorn Cattle Society.
4. No photographs from professional photographers allowed.
5. No photographs that have been entered into any previous competition allowed.
6. It will be a condition of entry that photographs entered may be used by the Society for any purpose without fee.
7. Entries must be sent to the Secretary by the closing date giving full details of which class/es are being entered.
8. Participants do not have to attend the AGM.

How to Enter

Entries can be sent to the Secretary by post, disc, memory stick, email or FTP such as Dropbox. In each case each photograph must be identified with the members' name and the class being entered. If you are sending photographs by email do check with me that I have received them if you don't get an acknowledgement as sometimes big files don't make it through the spam filter!

WEBSITE & SOCIAL MEDIA ADVERTS

The charge for adverts in the 'For Sale & Wanted' section of the website are as follows:

£10 plus VAT per animal with no picture.

£25 plus VAT per animal with a picture, the listing will also be posted on Facebook and Twitter for added exposure.

£30 plus VAT for herds or groups of animals with no picture.

£50 plus VAT for herds or groups of animals with a picture, the listing will also be posted on Facebook and Twitter for added exposure.

All adverts will be on the website for up to three months, or until the animal is sold.

NEWSLETTER ADVERTS

The printed newsletter is produced four times a year, usually March, June, September and December. Adverts for this newsletter are £50 plus VAT for a full page and will be placed where the member requests unless that page is already taken. All pages except the front cover are available, and the centre eight pages of the 29 May 2020. Please get in touch to book your page!

NEW MEMBERS



We should like to welcome the following new members to the Society:

Ms Jayne Shaw, Burnley, Lancashire

SHOWS NEWS

BULL, COW & HEIFER OF THE YEAR AWARDS

There are four awards for cattle shown during the year; Bull of the Year, Cow of the Year, Senior Heifer of the Year & Junior Heifer of the Year. The Secretary collates the results and calculates the points accordingly.

* Only shows with Longhorn classes judged by a Longhorn panel judge will qualify

* Points are calculated thus:

Points are awarded per class on a sliding scale, ie if 4 animals are forward in a class, 1st place gets 4 points, 4th place gets 1 point, then

Breed Champion; + 3 points

Reserve Breed Champion; + 2 points

Interbreed Champion; + 3 points

Reserve Interbreed Champion; + 3 points

* Where a bull is Breed Champion or Reserve Breed Champion he picks up points from the number of bulls below him in both classes (if applicable) plus 1 [representing himself]

* The points will be calculated from the five best scoring shows for that animal.

* In the event of a tie, the homebred animal will be deemed the winner.

NATIONAL SHOW 2020

**The National Show in 2020 will be at the Suffolk Show on
Wednesday 27 & Thursday 28 May 2020**

County
will be
date for stalls is
entries must be in by

The entry forms for the National Show at the Suffolk
Show are now available on their website and
posted out to members in March. Closing
24 April, and final notification of
8 May.

The show is in a four year TB
it's perfect for members in all TB
show promises us a warm welcome for
Show!

test area which means
test areas. The
our National

CANCELLED

We will have a hospitality marquee at the show and we
will be serving lunch after the judging on Wednesday 27
May. If you are thinking of coming along please let the office
know so we've got an idea of numbers for catering.

LONGHORN JUDGES PANEL

The Council has formalised how judges will be accepted onto the Society judging panel and this process will be in place from March 2020.

It is acknowledged that there are experienced judges who may wish to be on the Society panel, and also people who do not have a lot of experience but are keen and willing to learn. To accommodate all levels of experience there will be two routes onto the panel.

Experienced judges

- People that are on the panel lists of other cattle breeds and are 'proven' judges should either nominate themselves, or be nominated by two members of the Society using this form. In the latter case the nominee must agree to be put forward as a potential judge.
- Nominations should come to the Secretary, along with a short biography of the person, listing the Breed Society panels they are currently on. The Secretary will then contact the other Societies to verify that they are active panel members. A minimum of two years experience on another breed panel would be preferred.
- Nominations will then be submitted by the Secretary to a Council meeting for consideration.

Inexperienced judges

- People that have not had much judging experience or are currently not on any other cattle Breed Society panel list would need to be nominated by two members of the Society using this form and the nominee must agree to be put forward as a potential judge.
- Nominations should come to the Secretary, along with a short biography of the person.
- These people will be invited to attend a judge's workshop where they will be asked to judge mock classes, place cattle and give their reasons to current Council members and current judges' panel members.
- Should they prove their competency at a workshop they may be asked to judge at a couple of smaller shows before being fully accepted on to the panel and/or be asked to work with a well established panel judge as a mentor who would observe their judging from the ringside and feed their comments back to Council. These shows would still qualify for Bull of the Year etc. If these judging appointments are deemed successful they will be accepted onto the full judges' panel.
- If they do not prove their competency at a workshop then the Society may appoint a mentor to tutor them, or ask them to reconsider applying again in the future.

A nomination form is available in both the Knowledgebase and Forms sections of the website, or contact the office for a posted copy.

SOCIETY NEWS

SOCIAL MEDIA GUIDANCE

As technology develops, the internet and its range of services can be accessed through various devices very easily. Social networking and internet blogs can offer great opportunities for the Longhorn Cattle Society to communicate and engage with it's audience and members, and for members to communicate with each other and the wider community.

The Longhorn Cattle Society has a responsibility to promote the safe and responsible use of social networking and to raise awareness for everyone involved with the Society of the potential risks and to promote best practice.

A social media guidance document is available in the 'rules and regulations' section of the website.

HEALTH SCHEME MEMBERSHIP

If you are considering entering a health scheme the Society has negotiated some excellent rates with two of the biggest CHECS approved health scheme providers.

SAC Premium Cattle Health Scheme are offering Longhorn Cattle Society members free membership for their first year. Contact Julie on pchs1@btconnect.com to get an information and membership pack and then quote 'Longhorns - free membership for 1st year' on your membership application form. Their website is <https://www.sruc.ac.uk>

Biobest are offering Longhorn Cattle Society members 50% off the cost of membership for the first year. Contact Paul on Paul.Burr@biobest.co.uk to get more information. Their website is www.biobest.co.uk

Both these offers are for a limited period so please don't delay! Membership of a health scheme should be done in discussion with your vet as they may have a preferred provider. The Society's thanks go to SRUC and Biobest for these generous offers.

ONLINE SHOPPING BASKET

Most members use the online Grassroots system via the Society website to register their cattle and let the Society know about deaths and transfers.

One of the most common queries I get is about the 'Shopping Basket' that appears once you have processed any transactions that attract a fee. This DOES NOT link into the Society's accounts system and it is there so you know how much to pay the Society. It is meant to be printed off and sent to the office with your payment but now more people are paying via BACS this does not happen and the 'outstanding balance' accumulates. To clear off this balance do the following:

Click on 'Proceed to Checkout'
Click on one of the payment methods
Click on return to 'Manage your herd'

This will clear the balance off and not give you such a shock the next time you log on!

INBREEDING CO-EFFICIENT REPORT

Are you thinking of buying a new bull but you're not sure if he's too closely related to your cows? The Society can produce an inbreeding co-efficient report showing how 'inbred' calves out of your cows and by any specified bull or bulls will be. The report also gives the 'Breed Mean' so you can compare the inbreeding co-efficient of your chosen mating to that of the breed as a whole.

This is a free service, just let the office know the name of the bull or bulls and I'll do the rest.

SOCIETY SURVEY

The Society survey on the online Herdbook has been left live for the next few months as very few members have logged on and tidied up their herds. It is hoped that as members start calving and registering their births there will be more uptake.

The Society has a duty to maintain an accurate registry which can only be achieved if members keep their herd records with the Society up to date.

BUITELAAR LAUNCH LONGHORN BEEF SCHEME

An integrated beef scheme between a processor and a leading agricultural university is aiming to grow a heritage beef brand using Longhorn bulls as a dairy sire.

Newcastle University Farms and meat processor Buitelaar have launched the Longhorn Heritage Beef project at Cockle Park Research Farm, Northumberland.

The launch received extensive press coverage and links to published articles are on the website. An exclusive premium of £25 over the published average AHDB native market price is paid by Buitelaar for every Longhorn calf supplied into their finishing scheme, plus the cost of one straw of Longhorn semen.

A number of members have sold registered Longhorn bulls to dairy farms who are participating in the Buitelaar scheme and other bulls are available via AI.

Commercial semen companies are becoming more interested in Longhorn cattle - a list of bulls available from the Society, Society members or commercial semen companies is on page 27



GREAT BERWICK LONGHORN BEEF CRISPS

Shrewsbury based farmers, Sam and Claire Barker are delighted and very excited to be working with Pipers Crisps to produce the newest flavour in their flag ship range – Great Berwick Longhorn Beef.

Pipers approached the Barkers at the end of last year, following some very careful and extensive research into flavour, provenance and market demand. The combination of some the finest, most flavoursome, organic, pasture fed beef from the Great Berwick Longhorn herd and Piper's famously crunchy potato crisps has culminated in a flavour which is destined to be their third best seller.



Sam Barker said 'Claire and I are so proud of the recognition this gives to 15 years of hard work establishing the Great Berwick brand and of promoting the Longhorn breed. It's a complicated process converting our beef into a beef flavoured crisp, but the results are amazing. We can't believe that the crisps actually taste like our beef. They have to be tasted to be believed!'

Pipers Crisps are particularly popular in pubs, clubs and bars and they are of course available directly from Great Berwick Farm just north of Shrewsbury.

Many congratulations to the Barker family on this amazing use of their Longhorn beef!

SOCIETY AGM WEEKEND 16 - 18 October 2020

The AGM weekend will be in Leicestershire this year. We will be visiting Mike Winterton's Wanlip herd at Syston, Leicestershire on Saturday 17 October and then Ruth Wakeling's Bouverie herd on Sunday 18 October.

Mike has 40 Longhorn cows and he finishes all his steers and some heifers for Roberts Butchers in the nearby village of Mountsorrel, which he also happens to own. The farmland is land that has been reclaimed after gravel extraction up to the 1950's and there are also a number of other diverse enterprises both on the farm and nearby that the Winterton family are involved in .

Ruth has four Longhorns, and she also owns Bouverie Lodge bison and deer farm. The bison and deer are processed on-farm for meat and award winning pies, burgers and sausages. We will have a tour of the bison and deer and then members can stay for lunch in the café on the farm and have a look around the farm shop also on site.

A booking form has been emailed to all members who have an email address and is available on the website. If you'd like a form posted to you please let the office know.

We will be holding the photo competition again this year so please bear that in mind when you are out and about with your phones and cameras this summer.



REGISTRATION FEES 2020

From **1 January 2020** the following fees apply

Female registrations

Online reg up to 3 months	£20.00 + VAT	£24.00
Paper reg up to 3 months	£25.00 + VAT	£30.00
Late reg 3-12m	£40.00 + VAT	£48.00
Late reg 12-24m	£80.00 + VAT	£96.00
Late reg 24 +m	£100.00 + VAT	£120.00

Male registrations

Bulls up to 500 days old	£100 plus VAT	£120.00
Bulls 501-650 days old	£150 plus VAT	£180.00
Bulls 651-800 days old	£200 plus VAT	£240.00
Beef Certificate	£5.00 + VAT	£6.00

Transfer fees	£15.00 + VAT	£18.00
---------------	--------------	---------------

Transfer fees are payable on breeding females and registered bulls by both buyer and seller unless an alternative arrangement is made between both parties

BEEF CERTIFICATES

Beef certificates are £6. They are proof that your finishing animal is a pure-bred Longhorn should you need to offer such proof to a butcher, finisher, meat marketing scheme or restaurant. You can buy them when you notify your male calves by clicking on the 'with beef cert' option or if you decide you need one when your animal is finished then just contact the office.

YEAR LETTER

The year letter for 2020 is

U

SOCIETY NEWS

BULL REGISTRATION & PARENT VERIFICATION

All bulls being fully registered with the Society require full parentage testing. This complements the existing parentage testing regime of each 100th heifer registered.

This means if the registration of the bull is time critical you will need to allow more time (2-3 weeks) for the samples to be sent off and the registration to be finalised. You are more than welcome to send hair samples of bulls you may wish to register to the Society in advance, so the parentage can be verified before the registration form is sent in. If the bull is then registered the costs of the parent verification will be absorbed in the cost of the registration. If hair samples are submitted in advance but the bull is subsequently not registered then the member will be charged for the testing at cost, (currently £23 plus VAT per hair sample).

The Society has been collecting DNA from bulls being registered since 2012 (around registration number 23000/) and it is hoped that most of these hair samples can be used to prove the sire, but the Society has moved from Microsatellite testing to 'SNPS' testing which requires a more robust sample. This may mean that along with dam hair samples, repeat bull hair samples may be required. It is acknowledged that the sire or dam of the bull being registered may be dead and hair samples may not be available but this will not preclude registration.

Contact the office or download an updated registration form from the website (go into Join Us and then Forms) This gives instructions of how to take the hair samples. Contact the office if you require sample bags - potentially three bags per registration - one for the bull being registered, one for his sire and one for his dam

Also on the Forms page is the minimum weight for age chart on the next page so you can easily calculate what your bull needs to weigh at any given age in order to meet the minimum weight requirements for registration.

BULL REGISTRATION MINIMUM WEIGHTS

Bulls that are proposed to be kept for breeding must be inspected by a practising veterinary surgeon prior to registration and a registration form completed. Application for registration should reach the Society office when the animal is between 365 and 800 days of age, or if the bull has reached the minimum weight of 431kg before it is 365 days old then registration may be applied for at that time. It must be inspected by a vet by 800 days of age and must have reached a minimum adjusted weight of 431 kg at 400 days, with 1kg per day adjustment for bulls over 400 days up to 631 kg at 600 days and 0.5kg per day adjustment for bulls between 600 and 800 days of age up to 731kg at 800 days. Applications must be made within one month of the bull being weighed and inspected by the vet. All bulls must adhere to the breed standards

Minimum weight for age chart

Days old	Min Weight kg	Days old	Min Weight kg	Days Old	Min Weight kg	Days Old	Min Weight kg
<365 days	431						
365	396	485	516	605	633.5	725	693.5
370	401	490	521	610	636	730	696
375	406	495	526	615	638.5	735	698.5
380	411	500	531	620	641	740	701
385	416	505	536	625	643.5	745	703.5
390	421	510	541	630	646	750	706
395	426	515	546	635	648.5	755	708.5
400	431	520	551	640	651	760	711
405	436	525	556	645	653.5	765	713.5
410	441	530	561	650	656	770	716
415	446	535	566	655	658.5	775	718.5
420	451	540	571	660	661	780	721
425	456	545	576	665	663.5	785	723.5
430	461	550	581	670	666	790	726
435	466	555	586	675	668.5	795	728.5
440	471	560	591	680	671	800	731
445	476	565	596	685	673.5		
450	481	570	601	690	676		
455	486	575	606	695	678.5		
460	491	580	611	700	681		
465	496	585	616	705	683.5		
470	501	590	621	710	686		
475	506	595	626	715	688.5		
480	511	600	631	720	691		

SOCIETY NEWS

FEMALE REGISTRATION & PARENT VERIFICATION

The purity of the Longhorn breed is one of its major selling points and to verify this each 100th female registered is required to be parent verified. The office will contact the breeder as soon as possible after the registration has been received to ask for hair samples from the calf, and her sire and dam if their DNA samples are not already held on file by the Society. Should the sire not be on the holding then the current owner will be asked to provide a sample if one is not already held. DNA samples of all AI bulls are already held and if the bull is dead then a sibling or close relative will be sought.

DISBUDED CATTLE

Following a rule change at the 2017 AGM, disbudded cows, heifers or bulls are eligible to compete in show classes for breeding cattle. Disbudded cattle may be shown at Society sales.

ON-FARM SOFTWARE

If you use an on farm cattle management software programme that can produce spreadsheet reports the office can now accept these and embed them into the Society registration software to produce your birth records and registrations. This will mean you don't have to log onto the website to do your Society registrations. Just email the Excel file to secretary@longhorncattlesociety.com

BEEF OUTLETS PAGE ON THE WEBSITE

The Society website had a 'Beef Outlets' page where members and retail outlets selling Longhorn beef are listed. Are you on that page? If so could you please check your entry to make sure it's all up to date and has the correct details for you. If you are not listed and would like to be please email the office and you'll be added in. There's an interactive map so visitors can search for Longhorn beef suppliers in their area.

Help the Society to help you promote your Longhorn beef!

SOCIAL MEDIA

As you may have read in recent newsletters that the Society is offering members a fantastic opportunity to promote their herds and the breed via the Society website, Facebook, Twitter and Instagram. I am posting a short profile of a Society member describing, in their own words, what their Longhorn herd means to them. Every member is different and keeps their cattle for different reasons so each member offers a new insight into the versatility of the breed and the broad range of Society members.

All you need to do is email the office with the answers to the questions below (a maximum of 50 words per answer please!), attach up to four photos that best illustrate your herd, include your social media links (if you use them) and then you'll be in with a chance of being one of our featured herds. If you are not involved with social media it doesn't matter, your story will still be of interest to other people and it will help promote the breed.

Help the Society to promote you and your Longhorns!

Who are you (name and herd name) (max 50 words)

Where are you (nearest town and county) (max 50 words)

How did you find out about Longhorn cattle and decide they were the breed for you: (max 50 words)

When did you start keeping Longhorn cattle: (max 50 words)

Why did you start keeping Longhorn cattle: (max 50 words)

What are you trying to achieve with your herd: (max 50 words)

Are you doing with your cattle that is unique and different? (max 50 words)

How would you sum up the Longhorn breed: (max 50 words)

Website:

Facebook:

Twitter:

Instagram:

Other social media links:

Don't forget the photos! Email to: secretary@longhorncattlesociety.com

TYPE CLASSIFICATION

In common with many other breeds the Longhorn Cattle Society offers Type Classification to its members.

Longhorn breeders have made huge strides in the last 20 or so years to improve their cattle through careful and selective breeding. Type classification provides an independent assessment of members' cattle in order to identify strengths and weaknesses within the herd and speed up breed improvement.

Type classification is also an excellent independent guide for new members who will be able to select cattle that have been assessed when establishing a herd if they wish.

Cattle are assessed by classifiers from NBDC who have been specially trained to classify beef cattle. Assessed on 14 different linear traits that make up four composite traits, a final score results in a grade from 'poor' to 'excellent'.

This grade is then appended to the animal's pedigree so anyone can see how an animal has been independently assessed. As the scheme develops multiple generations of cattle will be inspected and the results will inform members which cattle they should retain in their herd to improve the quality of both their herd and the national population.

The breeders that have had their animals classified so far have all reported that the process has been straightforward and very positive. These members, and a list of the cattle that have graded VG (Very Good) and EX (Excellent) are in the Knowledgebase on the website.

Ewan Mackintosh from the Little Oakley herd had his cattle classified in 2018- you can read about his reasons for joining the scheme and how his classification visit went on the opposite page.

If you think this is something you would like to participate in please contact the office for more information or go to the link below. If you'd like to talk to a member who has had their cattle classified please contact any of the members listed in the link.

The current booklet is in the Knowledgebase of the website or call the office for a copy.

<https://www.longhorncattlesociety.com/knowledge-base/article/type-classification/>

TYPE CLASSIFICATION

The decision to have our Little Oakley herd of English Longhorns classified was a straightforward one. My day job is as a nutritionist within the dairy sector and many of my, admittedly more progressive, dairy clients have their cows scored on an on-going basis. Whilst I haven't asked them directly, I believe they do this help them make breeding decisions and to provide confirmation that their direction of travel is the right one. The use of classifying with the UK pedigree dairy sector is commonplace.

I have had a connection with cattle for over 40 years and, as such, I think I have a reasonable ability to differentiate a group of cattle. However, this is my view and, as is the case with most things it may not actually be the case. It had been over 12 years since we bought our six foundation Longhorn heifers from a couple of herds in Wiltshire. Since then we've only used a small number of bulls on the herd, four in fact, and their impact has been quite noticeable especially those which have had a negative influence. During the early years in an effort to grow the herd we kept most daughters. In more recent times we have culled harder and sold some heifers; we've been in position to be more selective. It was good time to confirm, either way, whether our breeding/culling decisions had been the right ones.

There is genetic variation within every breed and the degree to which this exists obviously varies considerably. Whilst on paper it doesn't appear that the English Longhorn breed has as much scope and variation as most other breeds, in reality it is quite clear that this is not the case. One only has to visit one of the Breed Society sales to witness this for oneself.

Therefore, given all of these factors the opportunity to have our herd classified was one that I felt was a valid one. A call was made to Debbie and from there an appointment was made for a classifier to meet at a field in rural Northamptonshire in early July last year. Debbie did mention the cost, it can't have been too steep as I can't actually remember what this was. Once on site it did occur to me that it might be a complete waste of time. Our cows don't get the human contact that some herds get so I began to think that we were going to be chasing the cattle around without getting anywhere near. However, the classifier was very relaxed and confident that within a few minutes the herd would calm down and she would be able to get down to business. Sure enough within half an hour or so the job was done, our herd had been scored. The classifier uses a handheld device and simply punches in numbers which all go together to provide a final score. During the process various comments/observations are made, some positive some negative, a few of which I wasn't aware of. Having the classifier visit also focuses one's eye on one's cattle, it's a bit like not seeing the wood for the trees? One can often become blind the most obvious things that are right in front of us but are noticeable to others, especially trained others.

In conclusion, I would strongly recommend that breeders take advantage of this service. I am confident that they will find it very useful and I strongly recommend being present when the classifier visits. They will definitely learn something from the process whilst also receiving confirmation as to quality of their herd. We have had it confirmed what we need to focus on when choosing our next bull and when selecting those heifers to keep as replacements.

Ewan Mackintosh, Little Oakley Longhorns

TB COMPENSATION

Whilst the eradication of Bovine TB should be at the forefront of APHA's minds, it's inexorable creep across the country means more and more members are being affected. A quick look at the difference between the compensation you will receive for a registered pedigree animal and a non pedigree animal might make registration of all your calves a consideration. Retrospective pedigree registration of TB reactors is not permitted and APHA will usually check the online database when a reactor is confirmed to check it's status.

The table shows compensation for March 2020. It is updated each month on the DEFRA website and is applicable for all breeds.

The table is applicable to England only - Wales and Northern Ireland are on individual valuation and Scotland is TB free.

Further detailed explanation and the most recent compensation table is available on the DEFRA website, and the website www.tbhub.co.uk also has current information.

Age	Non pedigree male	Pedigree registered male
Up to 6 months	£186-£370	Individual valuation
6-12 months	£675-£830	Individual valuation
12 to 20 months	£906-£976	12 to 24m £4675
20+ months	£1045-£1345	24+ m £2028
Age	Non ped female	Pedigree registered female
Up to 6 months	£132-£318	Individual valuation
6-12 months	£554-£701	£1624
12 to 16 months	£793	12-24m £1682
16-20 months	£894	24+ m not calved £1803
20+ months not calved	£988	24-36m individual valuation
20+ months calved	£887	36m+ calved £1318

REGIONAL GROUPS

The regional groups operate independently of the Society and organise herd visits, social events and herd competitions. Enthusiastic group members are always welcome. Do get in touch with your local breeders group co-ordinator and get involved in group activities

Northern Longhorn Breeders Group

For details of Group activities

**Contact: Graham Walker, Newton Farm Cottage, Huby, York, YO61 1HQ
Tel: 07957 208021
Email: walkergraham93@gmail.com**

Midland Longhorn Breeders Group

For details of Group activities

**Contact: Claire Saxby, Lower Anchor-Farm, Litton, Buxton, Derbys, SK17 8RN
Tel: 07779 246793
email: clairesaxby775@icloud.com**

Mid West Longhorn Breeders Group

For details of Group activities

**Contact: Peter Guest, Colaba Lodge, Hamnish, Leominster, Herefordshire HR6 0QN
Tel: 01568 760251.
Email: colabalonghorns@aol.com**
Sunday 12 July. Summer visit to Adam Knight (Morghain) and Bev & Mark Wheeler (Arlebrook) herds. 2pm for a 2.30pm start

Sunday 15 November. Awards lunch. The Bell Inn, Standerwick, Somerset.

Welsh Longhorn Breeders Group

For details of Group activities

**Contact: Bernard Llewellyn, Carreg Cennen Castle, Trapp, Llandeilo, Dyfed, SA19 6UA
Tel: 01558 822291
E: bernard@carregcennencastle.com**

MERCHANDISE

The Society offers a comprehensive range of merchandise. Ties, caps and mugs are available from the office, clothing such as hoodies, polo shirts, sweatshirts etc are available to order with a two - three week lead time. Items of clothing have the Society logo and can have your herd name embroidered on them.

The full range and the order form are in the 'Knowledgebase' section of the Society website or from the office.

GRANT FUNDING

Funding is available for agricultural research and development

The Henry Plumb Foundation helps young people (18-35) who are passionate about making a career in agriculture. Grants of £500 to £3000 are made to successful applicants, who are also paired with a mentor to help them. The grants may help with business ideas, internships, business or management courses or overseas exchanges.

Funding interviews are held twice a year. The next deadline for applications in 2020 is Friday 6 March and Friday 4 September. Henry Plumb has the Max-stoke herd of Longhorns

The Nuffield Farming Scholarships Trust awards life changing scholarships that unlock individual potential and broaden horizons through study and travel overseas, with a view to developing farming and agricultural industries. Their motto is "*Leading positive change in agriculture*". Applications for 2021 opened in January 2020 and close in July 2020.

The Winston Churchill Memorial Trust runs the Churchill Fellowships, a unique programme of overseas research grants. These support UK citizens from all parts of society to travel the world in search of innovative solutions for today's most pressing problems. Every year they award up to 150 Fellowships. These fund outstanding individuals to travel for 4-8 weeks, anywhere in the world, researching a topic of their choice among global leaders in their field. On their return, we help them to share their global learning with professions and communities across the UK. One of the categories for funding is 'Environment, conservation and sustainable living' and another category is 'Rural Living: strengthening rural communities' which may appeal to Society members looking for research grant funding. The next round of applications opens in April 2020.

All three organisations have excellent websites and a quick Google search will take you straight to them.

BULLS FOR SALE

Please check the website for up-to-date listings of cattle for sale, photos and extra information

John Huntbach, New Farm, Baddiley, Nantwich, Cheshire, CW5 8NP

Telephone: 01270 524216

Email: John.huntbach@btconnect.com

KIRKLAN PEDRO 29811/P00463

Born: 11/02/2015

Sire: Stoke Inca 18979/I0021

Dam: Tetford Scilla 21981/L0543

6 month TB test area, and there has never been a case of TB in the herd. The herd tested clear week commencing 18 November. His progeny can be seen

Robert Parker, Derby Hills Farm, Ticknall, Derbyshire, DE73 7LD

Mobile: 07973 297404

BLACKBROOK ZULU 29836/P00380

Born: 04/03/2015

Sire: Blackbrook Uruk-Hai 21588/K0380

Dam: Blackbrook Vixen EX91 21976/L0380

Lovely quiet bull, only for sale as he will be back on his daughters.

Mr D Phillips, 7 Boldacre, Alton Pancras, Dorchester, Dorset, DT2 7RR

Tel: 01300 348656, Mobile: 07500 626565

Email: dave.phillips@synergyfarmhealth.com

ETHERIDGE SPARK 34571/S01243

Born: 05/05/2018

Sire: Long Ash Ohola 28466/O00241

Dam: Fosseyway Acorn 26723/O00404

Very quiet and easy to handle. Has been shown.

Please check the website for up-to-date listings of cattle for sale, photos and extra information

Tom Taberner, 86 Britannia Drive, Stretton, Burton on Trent, Staffs, DE13 0FB

Tel: 07762 586916

Email: tommytab@btinternet.com

BULLS FOR HIRE

WELLHEAD Q-LLINAN 31654/Q00268

HENNISFIELD FEARLESS 27669/N01041

HENNISFIELD JUPITER 34236/R01041

Pedigree bulls available for hire. Please contact for more details, hire rates, availability etc.

Ben & Tori Stanley, Park Farm, Pool Road, Melbourne, Derbyshire, DE73 8AB

Mobile: 07884 112812

Email: info@toriandbensfarm.co.uk

SOUTHFIELD RAPTOR VG87 32544/R00460

Born: 15/03/2017

Sire: Southfield Outlaw 29733/O00460

Dam: Southfield Lace EX92 21830/L0460

Dam Southfield Lace: Breed Champion National Show 2019 (Gt Yorks Show)

Rita Adam, Struiehill Farm, Forgandenny, Perthshire, PH2 9DW

Mobile: 07767 218343

Email: adamandwilson@gmail.com

WELLHEAD ORWELL 28373/O00268

Born: 18/04/2014

Sire: Raincliffe Harry 22166/K0059

Dam: Wellhead Jubilation 19225/J0268

Good natured & easy to handle. Accredited free of BVD, Lepto, IBR & R1 Johnes. TB free area & tested free of TB. Only for sale as back on his daughters.

FEMALES FOR SALE

Please check the website for up-to-date listings of cattle for sale, photos and extra information

Peter & Edward Player, Whatton Manor Stud & Farm, Whatton in the Vale, Nottingham, NG13 9EX.

Tel: 01949 850221

Mobile: Edward, 07733 261757

Email: player.edward@gmail.com

BULLING HEIFERS

14 heifers for sale, aged between 22 and 24 months. Very strong heifers

Wildfowl & Wetlands Trust, The Mere, Fish Lane, Burscough, Ormskirk, Lancs, L40 0TA
Tel: 01704 895181

Email: Louise.Clewley@wwt.org.uk

2019 YOUNGSTOCK

Sire: Fishwick Polar Star 30109/P00087
Seven pedigree heifers (8-10 months), two heifers (9-10 months) out of unregistered cows, three steers (9-10 months). Hardy calves that have been outwintered but used to race and crush. 4 year TB test area, tested Feb 2020.

Mr D Howden, Cornbury Park, Charlbury, Oxon, OX7 3EH

Mobile: 07792 026695 (J Brewer)

Email: jamiesbrew@hotmail.co.uk

POINTER FLAKE A SHAKE

Born: 03/04/2019

Sire: Aberdeen Nik EX90 27511/N01114

Dam: Treverton Nettle VG85 24883/N00899

Flake a Shake and six further yearling heifers for sale.

Carol Bedson, Park Farm, Pipegate, Nr Market Drayton, Shropshire, TF9 4HX

Mobile: 07721 772231

Email: carolbedson359@btinternet.com

HERD REDUCTION

Herd reduction due to loss of grazing. Cows scanned 6-8 months on calf to Cholmondeley Poacher. A yearly selection are blood tested for BVD, IBR, Lepto & Johnes—no incidents to date
Closed herd, 12 month TB test area, farm has no history of TB

Please check the website for up-to-date listings of cattle for sale, photos and extra information

Bertrand Facon, Lessor Farm, Milcombe, Banbury, Oxon, OX15 4RT

Mobile: 07785 221961 (Bertie), 07710 054792 (Ben)

Email: gentons.longhorns@gmail.com

YEARLING HEIFERS

A large selection of junior heifers for sale, many the offspring of EX rated cows.

Charles Cottrell Dormer, Dower House, Rousham, Steeple Aston, Oxfordshire, OX25 4QU

Tel: 01869 347110, Email: ccd@rousham.org

HEIFERS

Should anyone be interested in some Rousham breeding we have 10 heifers born in 2019 and seven born in 2018 for sale. Sires Rousham Lord and Blackbrook Zoom In.

STORES FOR SALE

Andrew & Ruth Goodman will be entering a significant number of store cattle at the Society's Spring Store Sale at Worcester on Saturday 11 April.

On offer will be around 15 x 12-14 month steers, 15 x 24-26 month old steers and around 15 x 11-14 month old heifers and 15 x 20+ month heifers.

SEMEN FOR SALE

The following bulls are available from the Society:

Cosby Archer, Fishwick Oarsman, Grove House Baron, Honeywood Calicles, Leebarn Isambard, Long Ash Lancelot, Plaitford Orlando, Rousham Monty, Shugborough Benbow, Tregonhayne Startrek

Eyebrook Richard, royalty of £200 payable on bulls registered

Grove House Baron, royalty of £200 payable on bulls registered

Honeywood Edmund, royalty of £200 payable on bulls registered

Llanthrothy Kestrel, royalty of £100 payable on bulls registered

Rousham Goliath, royalty of £200 payable on bulls registered

The following bulls are available direct from the breeders

Fishwick Lord of the Rings 23577/L00087, (Peter Close 07779 937217)

Royalty of £200 payable on bulls registered.

Gentons 007 James Bond 27966/001168 (Bertie Facon, 07785 221961 or

Ben Bellew 07710 054792)

The following bulls are available from AI companies

Cogent www.cogentuk.com

Blackbrook Touchstone 19955/J00380

Royalty of £100 per heifer calves registered, £200 on bulls registered.

Genus: www.genusbreeding.co.uk

Carreg Sanfoin 33852/S00149

Carreg Superman 33853/S00149

Norbreck Genetics: www.norbreckgenetics.com

Blackbrook Rochester 16820/H0380

Royalty of £500 payable on heifer calves registered, £1000 on bulls registered

Blackbrook Sabre 18015/I0380

Royalty of £250 payable on heifer calves registered, £500 on bulls registered

Pointer Eat You Alive 33903/S01244.

Royalty of £30 payable on both heifer calves and bulls registered

Semex: www.semex.co.uk

Gupworthy Onzlo 28002/000873

CATTLE WANTED

**Charles Ashbridge, Thirsk, N Yorkshire,
YO7 2HL**

Tel: 01845 525330 or 07790 016823

Email: charles@tastetradition.co.uk

All types of cattle wanted for finishing

**Sam Barker, Shrewsbury, Shropshire,
SY4 3HS. Tel: 07793 365517**

Email: sam@longhornbeef.co.uk

Organic steers and heifers wanted for finishing.

Mr P Grabham, Tiverton, Devon, EX16 7AN

Tel: 07875 464424

Email: tintin11@btconnect.com

Steers wanted for finishing

Ben and Tori Stanley, Derbyshire, DE73 8AB

Mobile: 0788 4112812,

Email: info@toriandbensfarm.co.uk

Steers and heifers wanted for finishing

Tom Mowles, Nailsworth, Glos, GL6 0SJ

Tel: 07545 562984

Email: tom.mowles@mowlesfarms.co.uk

Yearling and two year old steers and heifers wanted for finishing.

Richard Vaughan, Ross on Wye, Herefordshire

HR9 6JN Tel: 01600 890296

Well grown store cattle male or females required for finishing.

A Goodman, Great Witley, Worcestershire, WR6

6JJ Tel: 01299 896590, mob: 07980271173

Steers wanted for finishing

Mike & Yvonne Smith, Ashbourne, Derbyshire,

DE6 5JF Mobile: 07860 467877

Email: michael@hennisfieldfarm.co.uk

Strong stores wanted

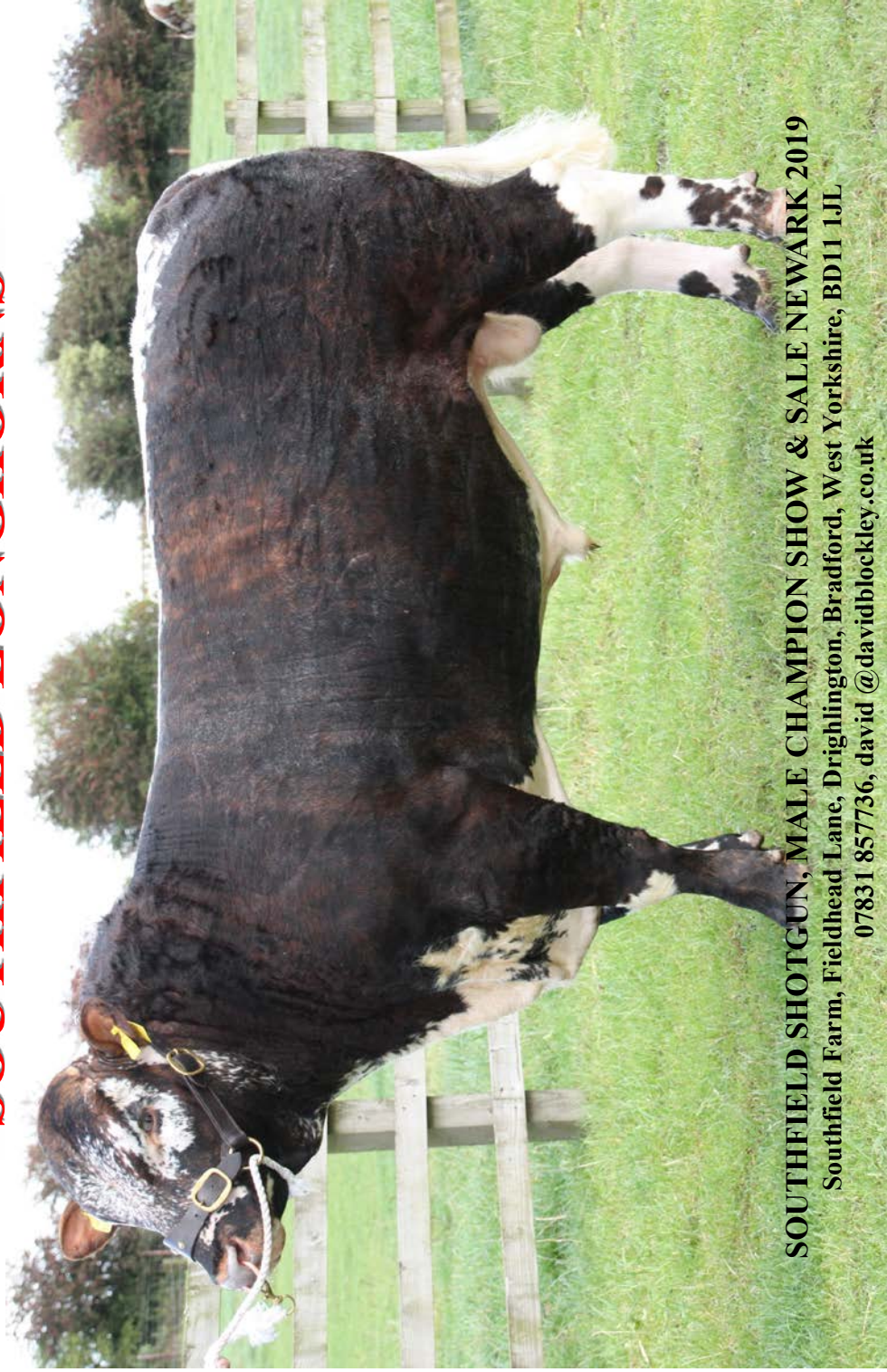
SHOWING EQUIPMENT OFFERED

Jill and Andrew Nelson are having giant tidy up and Jill has gathered together their showing lead ropes, halters etc, including a leather bull halter and two leather cow halters. They are very willing to give them away if there is someone starting out who could use them.

It's an assorted box, so whoever has the halters would need to take everything. There are quite a few neck straps too. For collection from Rutland.

If you are interested please contact Jill on hambleton_lodge@hotmail.com

SOUTHFIELD LONGHORNS



SOUTHFIELD SHOTGUN, MALE CHAMPION SHOW & SALE NEWARK 2019

Southfield Farm, Fieldhead Lane, Drighlington, Bradford, West Yorkshire, BD11 1JL

07831 857736, david@davidblockley.co.uk

Fishwick Longhorns

We run about 40 pedigree Longhorn cows producing 15 - 20 heifers and 6 - 8 registered bulls annually. This year we are calving down 12, mainly Lord of the Rings heifers with another 12 to go to the bull. To make room we will have for sale up to 20 cows with calves at foot or in-calf or maiden heifers

Fishwick Queen of the Ring with Fishwick Top of the Pops



[Fishwick Macavity calf out of Fishwick Lord of the Rings daughter]



**Main Service Sire 2020
Fishwick Philanderer
Sire: Fishwick Macavity
Dam: Croc Mhor Foxglove
[Lord of the Rings mother]**

Pick of the Herd Opportunity!

For anyone wanting 5 – 10 animals or more there is an opportunity to have “pick of the herd” with provisos:
e.g. complete blood lines could not be taken
Tel. 01289 386 181 Mob. 0777 993 7217 [Peter]
Mob. 07702 317 303 [Rob] Mob. 07784 155 991 [Ashley]